

A stylized, golden pen nib logo with a curved, decorative top and a pointed tip, set against a white background.

*Shepherd*



# Shepherd 45' MOTOR YACHT



*Magnificent . . . a gratifying reward for discriminating yachtsmen. The 45' Shepherd is a motor yacht custom designed and constructed for the absolute pleasure of the most discerning luxury lover.*

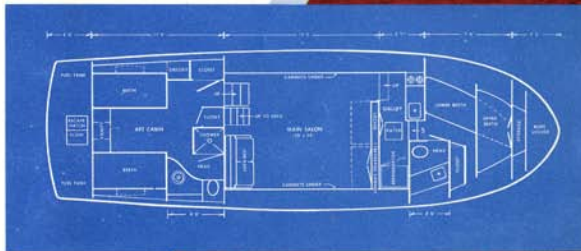
*Majestic! . . . a dynamic exterior styling to stir your pride. Hooded reverse-canted windshields . . . gently curved cabin lines . . . flush deck . . . blend with the unique styling of custom workmanship to create a low, graceful aft-stateroom craft.*

*Spacious . . . gracious . . . throughout the 45' interior. Regal relaxation for six to eight difficult to duplicate in the most lavish penthouse. The Main Salon is finished in hand-rubbed teakwood with your choice of luxurious drapery, upholstery and deep-pile carpet. Generous storage area . . . twelve cabinets line the sides of the Main Salon, with rafter sections providing a touch of elegance while permitting excellent ventilation. Beverage cabinet and hideabed included.*

*Master Stateroom . . . distinctive decor of velvet-smooth teakwood panelling. Impressive Shepherd-designed built-in vanity, chest of drawers, shelves and two closets, three-piece toilet room with enclosed shower, simulated marble counter, colour-co-ordinated tile, shower lining, and sink, complement gracious cruising.*

*The Forward Cabin features two berths, hanging locker, individual toilet room . . . all maintaining an atmosphere of luxury.*

*Generous use of formica, tessara and stainless steel highlight practicality in the Galley. The divider between Galley and Main Salon folds down in two sections providing a dinette and serving counter.*



Standard accessories include hardtop, teak decks fore, aft and sides, bow railing and side stanchions, hot and cold water pressure systems, electric head aft, enclosed shower, deluxe helmsman's chair, heavy duty windshield wiper, screens and drapes, two automatic bilge pumps, two blowers, shore plug and four 110V outlets, plus many other luxury items, even to linoleum covered engine room floor.

Twin 280 hp. gas engines provide speeds to 25 mph. Diesel optional. Fuel capacity: 350 Imp. Gals. (435 U.S.). Fresh water supply: 125 Imp. Gals. (155 U.S.).





# Shepherd 38' MOTOR YACHT

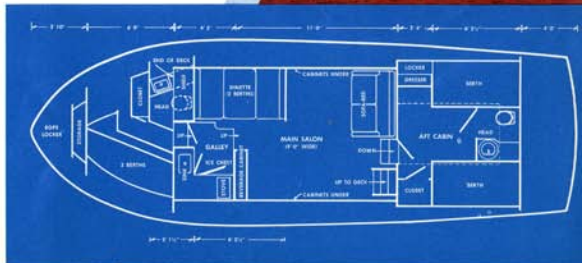


For Prestige and Pleasure . . . this brilliant new Shepherd 38' aft stateroom yacht accommodates eight in superb style. From raked stem, along gleaming white hull to curving Honduras Mahogany transom, she's a model of exemplary Shepherd Craftsmanship. 12'11" beam; 6'5" headroom.

Three separate private cabins . . . with the Main Salon boasting exquisite precision cabinetwork, sliding doors along sides, beverage cabinet and hideabed. The Master Stateroom is lavishly fitted with a chest of drawers, full length hanging locker, two-piece toilet room with matching tile, sink and drapes. Carpet, drapery and upholstery are owner's choice. Two berths, hanging lockers, stowage space, two-piece toilet room in Forward Stateroom. The spacious Galley contrasts formica with mahogany . . . dinette (which converts to double bed at night) set at window level for delightful mealtime views. A convincing demonstration is all you'll need to prove the soft level ride at all speeds. . . to 31 mph.



Standard equipment includes teak decks fore, aft, and sides, bow railing and side stanchions, pressure water system, heavy duty windshield wiper, convertible top, deluxe helmsman's chair, laminated safety plate glass throughout, insulated engine compartment, automatic bilge pumps, bilge blowers, and many other luxury accessories.







# Shepherd 33' EXPRESS CRUISER

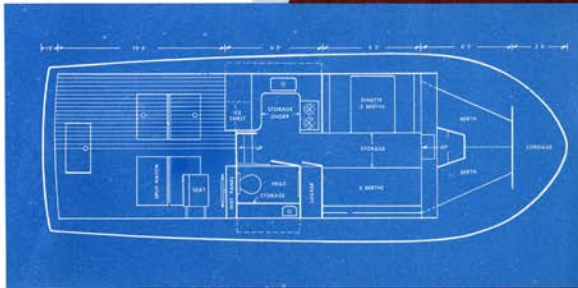


A standout in styling and performance. She's graceful luxury to justify your pride. Powerful Twin engines to 280 hp speed her over 36 mph. Accommodation for six.

You'll be impressed by the spacious Main Cabin (6'6" headroom; 11'9" beam). "Get-togethers" are great fun in this expansive cabin. Window level dinette and large settee invite complete relaxation. Drawers under dinette and settee provide extra stowage area. The Galley is completely new, doubling stowage and counter area. Hide-away stove enclosed in counter; ice chest is at arm level in bulkhead between galley and aft cockpit. All counters formica covered.

Forward Cabin, finished in pastels, features perfect privacy. Two V-berths, with adequate stowage space.

Features such as convertible top, teak decks, laminated safety plate glass, automatic water pressure system, automatic bilge pump, blower, heavy duty windshield wiper, screens, and drapes, and many other luxury accessories included as standard.







Shepherd

## 28' EXPRESS CRUISER

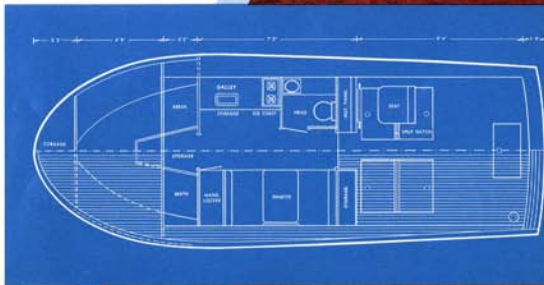
Unique styling of hull and cabin sets this cruiser apart from all others. New deep-V hull . . . new construction methods . . . bring a revolutionary new thrill to Shepherd yachting.

Thin, graceful lines of cabin structure are created in one-piece fiberglass and dynel. Decks and wide walk-abouts are beautiful, durable teak. Transom is mahogany planked. Beam: 10'6". Exceptionally smooth and stable, even in heavy seas.

The Main Cabin is spacious and bright. Rich carpeting with underlay blends with handsome drapes and upholstery. Galley has full 60" counter and plentiful storage. Upholstered dinette converts to double berth, and two wide V-berths. Enclosed head complete with cabinet and pressure water system add to your convenience. Drawers under dinette, and large hanging locker provide welcome stowage space.

A pine core consisting of long clear white pine planks, edge-fastened, covered inside and out with fiberglass and dynel fabric, produce remarkable hull strength and minimum maintenance.

Standard equipment includes teak decks fore, aft and sides, pressure water system, deluxe helmsman's chair, electric bilge pump and blower, screens and drapes, windshield wiper, laminated safety plate glass throughout, insulated engine compartment, trumpet horns, and other luxuries. Standard power up to 420 hp. gives speeds to 38 mph.





# Shepherd 25' EXPRESS CRUISER



Two thrilling models . . . *Sunliner* and *Standard* . . . Shepherd value twins, incorporating dashing new designs, styling and concepts of pleasure cruising. Sheer lines slope gracefully from bow to stern. Moulded fibreglass creates brilliant multiple-curve shapes in instrument console, hatch and air scoop to achieve distinction in design.

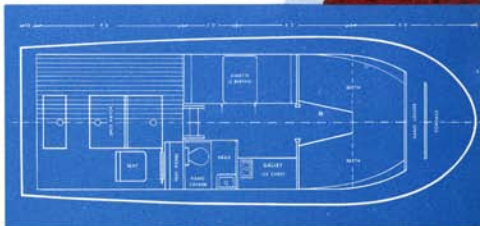
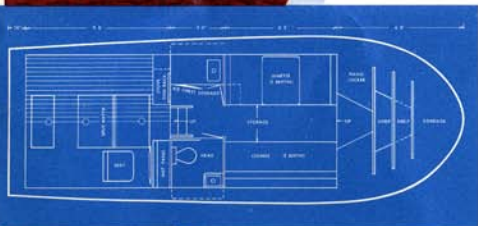
Both models are built on the same highly respected hull. Differences are in trim and equipment.

Two interior layouts are available for either model, each accommodating four in comfort. One features settee and dinette which convert to double berths, while the other has a convertible dinette and V-berths forward. Envious cabinetwork in a satin smooth finish, finger-tip convenience in the *Galley*, every space made useful . . . these are the unmatched hallmarks of Shepherd superiority.

The *Sunliner* is packed with value. Foldaway stove, dish rack, drawers under berths, teak decks all around, stainless steel bow railing, Corsair flushmount compass, convertible top, automatic pressure water system, windshield wiper, stainless steel ice chest door, drapery, deep pile carpets, screens, deluxe helmsman's chair, horn, and bilge pump, combine with a host of other Shepherd values to create incomparable pride.

25'4" through centre line, 9'4" in beam, almost three tons in weight, these Shepherds are built to meet the most severe conditions. Performance is amazing with a single engine . . . soft, smooth, exhilarating. Twin engines optional.

Most convincing evidence of the enduring pleasures of the 25' Express Cruiser is the fact that in recent years more 25's have been sold than any other Shepherd model, yet there are virtually no used 25's on the market.







## 22' RUNABOUT

The deep mirror finish in solid Honduras Mahogany is your first impressive indication of Shepherd's traditional ingenuity, skill and uncompromising quality. From stem to transom she's the most thrilling, most lavish runabout craft afloat.

In profile, the stainless steel trim leading from solid chrome plated bow casting to satin-smooth flashing amidships, creates a unique styling that invites excitement. Low, graceful lines distinguish this Shepherd in any company.

The cockpit . . . "lavish" underrated it. You've never seen . . . never lounged in a more luxurious craft. Bucket-type front seats are contoured foam padding covered in soft naugahyde, with centre sections deep-quilted in vertical ribbed pattern . . . the mark of custom upholstery. Full-width padded dash and instrument console upholstered, too. Glove compartment has a door. Seat backs conceal beverage cabinet and stowage lockers. Power up to 280 hp . . . speeds to 42 mph.

## 19' RUNABOUT

*Sportscraft performance . . . prestige appeal . . . choose Shepherd's 19' Runabout.*

Rich sculptured Honduras Mahogany deck and hull emblazoned with unique flowing stainless steel side trim creates a dynamic demand for action. Deep cushioned individual bucket-type front seats are form fitting . . . covered in two-tone vertical-quilt naugahyde. Full-width stern seat provides equal comfort in the same beautiful finish. Beverage cabinets and stowage lockers are built into seat backs. Instrument panel, side panels and portion of the covering board are foam padded. Custom windshield is moulded from tempered glass.

Give wings to your dreams. Step aboard . . . ease the throttle forward and skim across blue water at an exhilarating 45 mph. Compare the soft, smooth ride to the thrill of a downhill ski run. Compare performance . . . in turns, on the straightaway, towing waterskiers . . . she responds with the smoothness of jet flight, surges forward like a gazelle with power to spare.



## 16' COMBO

Inboard power . . . outboard drive . . . combine with a famous Shepherd hull and you have the enviable Combo.

Picture yourself behind the deeply canted one-piece wraparound windshield, cushioned in the deep-padded luxury of the bucket-type seats free floating on torsion suspension. Feel the surge of power as you ease the throttle and whisk across the water. What a thrill!

What skill has gone into the creation of this craft! The design . . . the workmanship . . . the sheer beauty of it all.

Cockpit seats six in limousine luxury. Full width stern seat is deep cushioned, upholstered in naugahyde. Front seat back has lower center section for easy access.

Standard equipment includes complete instrumentation, deluxe steering wheel, glove compartment, torsion suspended front seats, rubber floor carpeting.

Power plants to 160 hp. to provide all the speed and performance you'll ever want for thrilling water sports.

Shepherd

## SYMBOL OF SUPERIORITY !

"Shepherd" is synonymous with quality . . . in original design, in materials, in construction and craftsmanship. In thirty years the Shepherd reputation has become legend . . . for Shepherd Quality never varies, is never compromised.

The high calibre of workmanship is the result of co-operative efforts to be unsurpassed . . . the genuine interest of skilled cabinetmakers . . . the inherent pride in being part of a name that stands for leadership.

Every yachtsman will realize why Shepherd's unrivalled reputation is maintained through the years when he considers the quality of components and features listed below.

- Honduras Mahogany planking.
- double planked mahogany bottom with lead-bedded canvas between, then both layers rivetted together with hundreds of copper rivets, further strengthened with silicon bronze screws into the frames.
- selected white oak for all framework.
- frames on 12" centres on bottom.
- battens on 6" centres.
- frames double gusseted; gussets bolted, glued and screwed.
- the entire hull is pretreated with deep penetrating Bio-Met wood preservative.
- several coats of hand-rubbed varnish.
- custom double-chromed hardware.
- laminated safety plate glass.
- many, many other quality features which contribute to a superior craft.
- attention to minute details that result in the highest esteem of the craft's owner.

With due pride, we invite you to visit our plant to see for yourself why Shepherd is a symbol of superiority.

	Length	Beam	Moulded Depth	Draft	Freeboard Fore & Aft	Bottom	Sides	Deck	Seats	Headroom	Engine	Weight (Approx.)	Speed (Approx.)	Sleeping Accommodation	Frames & Battens	Stem & Keel	Fastenings	Windshield
16' COMBO	16'	6' 4"	37"	24"	25½" 18"	¾" Double Mahogany ¾" Total	¾" Honduras Mahogany	¾" Honduras Mahogany	Bench type front seat with walk-through. Full stern seat		80 to 160 hp	1350 lbs.	Up to 40 mph		Selected white oak	Selected white oak and mahogany	Silicon bronze screws, galvanized bolts	Plexiglass wraparound moldings top and bottom
19' RUNABOUT D.D. or V.D.	19'	6' 9"	44½"	25"	26½" 20½"	¾" Double Mahogany ¾" Total	¾" Honduras Mahogany	¾" Honduras Mahogany	Full back seat, bucket-type front seats		Up to 280 hp	2600 lbs.	Up to 45 mph		Selected white oak	Selected white oak and mahogany	Silicon bronze screws, galvanized bolts	Tempered glass wraparound
22' RUNABOUT D.D. or V.D.	22' 4"	7' 4"	52½"	26"	34½" 24"	¾" Double Mahogany ¾" Total	¾" Honduras Mahogany	¾" Honduras Mahogany	Full back seat, bucket-type front seats		Up to 280 hp	3000 lbs.	Up to 43 mph		Selected white oak	Selected white oak and mahogany	Silicon bronze screws, galvanized bolts	Tempered glass wraparound
25' EXPRESS CRUISER Standard & Sunliner	25' 4"	9' 4"	66"	27"	45½" 37"	½" Double Mahogany 1" Total	¾" Honduras Mahogany	Vinyl over ¾" plywood on std. model. ½" teak plank over ½" plywood on Sunliner	1 helmsman's chair, dinette, settee	6' 2"	Up to twin engines of 380 hp	5900 lbs.	Single: 30 mph Twin: 38 mph	4	Selected white oak	Selected white oak and mahogany	Silicon bronze screws, galvanized bolts	Standard: plate glass throughout. Sunliner: Laminated safety plate glass throughout. Ventilation: F.B. windshield
28' EXPRESS CRUISER	28' 7"	10' 6"	72"	30"	48" 42"	½" white pine planks covered inside and out with fibreglass and dymel: ¾" total	Same construction on sides as on bottom	½" teak planking over ½" plywood	1 helmsman's chair, dinette, V-berths	6' 3"	Twin engines up to 420 hp	7500 lbs.	Up to 38 mph	4	Selected white oak	Selected white oak and mahogany	Brass screws	Laminated safety glass throughout. Ventilation: F.B. windshield
33' EXPRESS CRUISER	33'	11' 9"	81¾"	30"	60" 45"	½" Double Mahogany 1" Total	¾" Honduras Mahogany	½" teak planking over ½" plywood	1 helmsman's chair, dinette, settee, V-berths forward	6' 6"	Twin engines up to 560 hp	10,000 lbs.	Up to 38 mph	6	Selected white oak	Selected white oak and mahogany	Silicon bronze screws, brass screws, galvanized bolts	Laminated safety glass throughout. Ventilation: F.B. windshield
38' MOTOR YACHT	38'	12' 11"	91"	33"	66" 53½"	¾" Double Mahogany 1¼" Total	¾" Honduras Mahogany	½" teak planking over ¾" plywood	1 helmsman's chair, dinette, 1 Toddway, 2 berths aft, double berths forward	6' 5"	Twin engines up to 560 hp; diesel optional	19,000 lbs.	Up to 30 mph	8	Selected white oak	Selected white oak and mahogany	Silicon bronze screws, brass screws, galvanized bolts	Laminated safety glass throughout. Ventilation: F.B. windshield
45' MOTOR YACHT	45'	14'	102"	36"	72" 64"	¾" Double Mahogany 1½" Total	¾" Honduras Mahogany	½" teak planking over ¾" plywood	1 helmsman's chair, 1 fold-away, 2 berths aft, double berths forward	6' 5"	Twin engines of 560 hp; diesel optional	26,000 lbs.	Up to 25 mph	6-8	Selected white oak	Selected white oak and mahogany	Silicon bronze screws, brass screws, galvanized bolts	Laminated safety glass throughout. Ventilation: F.B. windshield

16' COMBO: lifting rings fore and aft; uncleats; cleats; sheer mouldings; running lights; chocks; sheaves; L.H. glove compartment; garboard drain; torsion bar suspended front seat; full controls and instrumentation.

19' RUNABOUT: lifting rings fore and aft; uncleats; cleats; sheer mouldings; running lights; chocks; 2 pr. step plates; electric horn; 2 chrome transom vents; garboard drain; padded dashboard; tempered glass wraparound windshield; hydraulic reverse.

22' RUNABOUT: lifting rings fore and aft; cleats; sheer mouldings; running lights; uncleats; 2 pr. step plates; electric horn; chocks; cutwater; 2 chrome transom vents; garboard drain; vent windows; tempered glass wraparound windshield; 2 mahog. beverage cabinets with fold-down table tops; hydraulic reverse.

25' STANDARD EXPRESS CRUISER: electric bilge pump; electric horn; lights; 6 instrument panel; alcohol stove; s.s. sink; icebox; fresh water circulation pump; garboard drain; enclosed head with sink; mirror and cupboard; helmsman's chair; cabin hand rails; vinyl decks all over; screens and drapes; window in cabin door; gates in both railings; vent F.B. windows; bow lifting ring and stern lifting sockets; mahog. lighted mast; stern flapgate; gate valves on engine(s) and head; fully bonded against electrolysis; deep pile carpet; rollaway for'd hatch

screen; all necessary cleats, chocks, bits and uncleats; s.s. moulding; hydraulic reverse.

25' SUNLINER EXPRESS CRUISER: electric bilge pump; electric horn; hinged engine hatch; convertible top; coral-ink lighted compass; s.s. bow railing; laminated safety plate glass throughout; teak decks, chocks, bits and uncleats; drawers under berths; foldaway stove; s.s. sink; s.s. lined ice chest; s.s. door on ice chest; automatic pressure water system; screens and drapes; dish locker; 1 w/s wiper; running lights; 6 instrument panel; garboard

drain; enclosed head with sink, mirror and cupboard; helmsman's chair; cabin hand rails; window in cabin door; gates in both railings; vent F.B. windows; bow lifting ring and stern lifting sockets; mahog. lighted mast; mahog. stern flapgate; gate valves on engine(s) and head; fully bonded against electrolysis; deep pile carpet; rollaway for'd hatch screen; dish locker; 1 w/s wiper; running lights; complete instrumentation; garboard drain; enclosed toilet room with vanity, sink, mirror and locker space; deluxe custom helmsman's chair; cabin hand rails, window in cabin door; gates in both railings; ventila-

tion: F.B. windows; mahog. light-

ed mast; mahog. stern flapgate; blower; gate valves on engine and head; fully bonded against electrolysis; deep pile carpet; all necessary cleats; chocks, bits, uncleats; s.s. moulding and trim; automatic engine control; hydraulic reverse; engine compartment insulated.

33' EXPRESS CRUISER: automatic electric bilge pump; blower; automatic pressure water system; marmac engine control; hydraulic reverse; twin trumpet chrome horns; hinged engine hatches; laminated safety plate glass throughout; teak deck fore and aft; screens and drapes; rollaway for'd hatch screen; dish locker; 1 w/s wiper; running lights; complete instrumentation; garboard drain; enclosed toilet room with vanity, sink, mirror and locker space; deluxe custom helmsman's chair; cabin hand rails, window in cabin door; gates in both railings; ventila-

tion: F.B. windows; mahog. light-

28' EXPRESS CRUISER: electric bilge pump; twin trumpet chrome horns; hinged engine hatches; laminated safety plate glass throughout; teak decks fore, aft and sides; drawers under berths; built in Marine life chest; alcohol stove; s.s. sink; automatic pressure water system; screens and drapes; rollaway for'd hatch screen; dish locker; 1 w/s wiper; running lights; complete instrumentation; garboard drain; enclosed toilet room with vanity, sink, mirror and locker space; deluxe custom helmsman's chair; cabin hand rails, window in cabin door; gates in both railings; ventila-

tion: F.B. windows; mahog. light-



Instrument Panel	Gasoline Tank	Rudder & Propeller	Strut	Shaft	Shaft Log	Steering	Steering Wheel	Controls Gearshift	Floor Covering	Throttle Control	Upholstery	Seat Cushions	Hardware	Flagpole	Water Tank	Finish
Lighted; water temp., tach., ammeter, oil, light switches,	16½ gal.					Rack and pinion	Deluxe with horn ring	Single lever	Vinyl carpet	Single lever	Vinyl jersey backed	Foam	Stainless steel, chrome plated brass, and aluminum	Mahogany, lighted		Deck, topsides and transom varnished and painted, hull interior oiled and painted, bottom outside painted with anti-fouling copper-bronze
Lighted; water temp., tach., ammeter, oil, gas gauge, lighter, light switches, nameplates	21 imp. gals. stainless steel	Manganese bronze	Manganese bronze with B. J. rubber bearings	Tobin bronze	Bronze with synton seal	R.H. drag link	Deluxe with horn ring	On steering column	Vinyl carpet	On steering column	Vinyl jersey backed	Foam	Stainless steel, chrome plated brass, and aluminum	Mahogany, lighted		Deck, topsides and transom varnished and painted, hull interior oiled and painted, bottom outside painted with anti-fouling copper-bronze
Lighted; water temp., tach., ammeter, oil, gas gauge, lighter, light switches, nameplates	30 imp. gals. stainless steel	Manganese bronze	Manganese bronze with B. J. rubber bearings	Tobin bronze	Bronze with synton seal	R.H. drag link	Deluxe with horn ring	On steering column	Vinyl carpet	On steering column	Vinyl jersey backed	Foam	Stainless steel, chrome plated brass, and aluminum	Mahogany, lighted		Deck, topsides and transom varnished and painted, hull interior oiled and painted, bottom outside painted with anti-fouling copper-bronze
Lighted; water temp., tach., ammeter, oil, gas gauge, lighter, light switches, nameplates	Single; 45 imp. gals. Twin 2-30 imp. gals.	Manganese bronze	Manganese bronze with B. J. rubber bearing	Tobin bronze	Bronze with synton seal	Rack and pinion with cable	Ship's wheel	Hydraulic on instrument panel	Standard; carpet. Sunliner; carpet with underlay	On instrument panel	Vinyl jersey backed, fabrics	Foam	Stainless steel, chrome plated brass, and aluminum	Mahogany	Galvanized 20 imp. gals.	Deck, topsides and transom varnished and painted, hull interior oiled and painted, bottom outside painted with anti-fouling copper-bronze
Lighted; water temp., tach., ammeter, oil, gas gauge, lighter, light switches, nameplates	2-45 imp. gals. stainless steel	Manganese bronze	Manganese bronze with B. J. rubber bearings	Tobin bronze	Moulded in fiberglass—dyneel	Rack and pinion with cable	Ship's wheel	Hydraulic on instrument panel	Carpet with underlay	On instrument panel	Vinyl jersey backed, fabrics	Foam	Stainless steel, chrome plated brass, and aluminum	Mahogany	Moulded in fiberglass 40 imp. gals.	Hull outside painted, cabin top painted, interior woodwork all finished in natural satin varnish, bottom and sides up to waterline, transom varnished.
Lighted; water temp., tach., ammeter, oil, gas gauge, lighter, light switches, nameplates	2-45 imp. gals. stainless steel	Manganese bronze	Manganese bronze with B. J. rubber bearings	Tobin bronze	Bronze with synton seal	Rack and pinion with cable	Ship's wheel	Hydraulic on instrument panel	Carpet with underlay	On instrument panel	Vinyl jersey backed, fabrics	Foam	Stainless steel, chrome plated brass, and aluminum	Mahogany	Galvanized 35 imp. gals.	Deck, topsides and transom varnished and painted, hull interior oiled and painted, bottom outside painted with anti-fouling copper-bronze
Lighted; water temp., tach., ammeter, oil, gas gauge, lighter, light switches, nameplates	2-100 imp. gals. hot dipped galvanized	Manganese bronze	Manganese bronze with B. J. rubber bearings	Tobin bronze	Bronze with synton seal	Rack and pinion with cable	Ship's wheel	Hydraulic on instrument panel	Carpet with underlay	On instrument panel	Vinyl jersey backed, fabrics	Foam	Stainless steel, chrome plated brass, and aluminum	Mahogany	Hot dipped galvanized 80 imp. gals.	Deck, topsides and transom varnished and painted, hull interior oiled and painted, bottom outside painted with anti-fouling copper-bronze
Lighted; water temp., tach., ammeter, oil, gas gauge, lighter, light switches, nameplates	2-150 imp. gals., hot dipped galvanized	Manganese bronze	Manganese bronze with B. J. rubber bearings	Tobin bronze	Bronze with synton seal	Rack and pinion with cable	Ship's wheel	Hydraulic on instrument panel	Carpet with underlay	On instrument panel	Vinyl jersey backed, fabrics	Foam	Stainless steel, chrome plated brass, and aluminum	Mahogany	Hot dipped galvanized 135 imp. gals.	Deck, topsides and transom varnished and painted, hull interior oiled and painted, bottom outside painted with anti-fouling copper-bronze

built in Marvel ice chest; alcohol stove; s.s. sink; screens and drapes; rollaway for'd hatch screen; dish locker; 1 heavy duty w/w; wiper; running lights; complete instrumentation; garboard drain enclosed toilet room with vanity, sink, mirror, drapes and locker space; deluxe custom helmsman's chair; cabin hand rails; window in cabin door; window in both railings; ventilating F.B. w/w; bow lifting ring and stern lifting scoops; mahog. lighted mast with yardarm; mahog. stern flagpole; blowers; gate valves on engine and heads; fully bonded against electrolysis;

deep pile carpet; all necessary cleats, chocks, bits, unlatches; s.s. moulding and trim; engine compartment insulated; convertible top; hatch with deadlight.

38' MOTOR YACHT: two automatic electric bilge pumps; two bilge blowers; automatic pressure water system; marmec engine controls; hydraulic reverse; twin trumpet chrome horns; laminated safety plate glass throughout; teak decks fore, aft and sides; drawers used throughout; built in s.s. ice chest with s.s. door; hideway alcohol stove enclosed

in counter; s.s. sink; screens and drapes; rollaway for'd hatch w/w; wiper; international running lights; complete instrumentation; garboard drain; 2 enclosed toilet rooms; deluxe custom helmsman's chair; cabin hand rails; window in cabin door; ventilating F.B. w/w; mahog. lighted mast with yardarm; mahog. stern flagpole; gate valves on engine and heads; fully bonded against electrolysis; deep pile carpet throughout; all necessary cleats, chocks, bits, unlatches; s.s. moulding and trim; engine compartment insulated; convertible

top; mahog. beverage cabinet; 1 hideabed; s.s. bow railing and side stanchions; limber chain; hatch with deadlight; all cabin and engine compartment lights; engine compartment floor lined with linoleum; ladder in escape hatch.

45' MOTOR YACHT: two automatic electric bilge pumps; two bilge blowers; automatic pressure water system; 10 gal. hot water "galleyman" system; marmec engine controls; hydraulic reverse; twin trumpet horns; laminated safety plate glass

throughout; teak decks fore, aft and sides; built in Marvel s.s. ice chest; s.s. sink; hideway stove enclosed in counter; screens and drapes; rollaway for'd hatch screen; dish locker; 1 heavy duty w/w; wiper; international running lights; complete instrumentation; garboard drain; limber chain; 2 enclosed toilet rooms, aft one with enclosed shower; deluxe custom helmsman's chair; cabin hand rails; window in cabin door; ventilating F.B. w/w; mahog. lighted mast with chrome yardarm; mahog. stern flagpole; gate valves on engine and heads; fully bonded against

electrolysis; deep pile carpet throughout; all necessary cleats, chocks, bits, unlatches; s.s. moulding and trim; engine compartment insulated; hard-core teakwood beverage cabinet; 1 hideabed; s.s. bow railing and side stanchions; hatch with deadlight; all cabin and engine compartment lights; aft head enclosure for engine compartment floor lined with linoleum; ladder in escape hatch; fold down table for dinette; 4 110V outlets (double) and 4 shoreplug; hand bilge pump, vanity chair, gate errors; galleys exhaust fan; drawers used throughout.

ABBREVIATIONS:  
 H.T.—Hatch Top  
 V.D.—Drive  
 F.B.—Flying Bridge  
 H.T.—Hatch Top  
 hp—Horsepower  
 R.H.—Right Hand  
 L.H.—Left Hand  
 s.s.—Stainless Steel  
 w/w.—Windshield

Specifications subject to change without notice.

SELECTIONS  
 SPECIFICATIONS

SHEPHERD BOATS LIMITED NIAGARA-ON-THE-LAKE ONTARIO CANADA